

Unsaturated & Saturated HAST Chamber
Compact Pressure Cooker PC-242HSR2

Newly-developed Dual Chamber System

built into a Compact Body!!

Unsaturated Pressure Cooker



Products shown in this brochure are manufactured by the company, ISO 9001 / 13485 / 14001 certified.

The test chamber is separated from the steam-generating chamber.
It upgrades functions and reliability of test performance.
Dual Chamber Type Unsaturated Pressure Cooker (HAST Chamber)

Main Features

High Performance Dual Chamber System

The dual chamber structure which consists of the two independent chambers of a test chamber and a steam-generating chamber is employed. Since the influence of the temperature between the test chamber (Dry bulb) and the steam-generating chamber (Wet bulb) is little, the more stable test evaluation can be obtained when compared with a conventional single chamber system.

Multifunction LCD Display

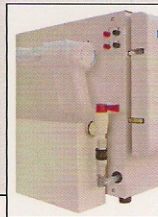
Since the interactive touch key data entry system is equipped, it is easy to operate the display window from the menu screen to the monitor screen, graphic display, mode setting screen, program setting screen and etc.

In addition, user friendly function such as graphic display and alarm message display are also available.

Automatic Water Supply

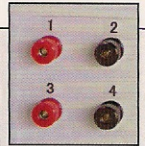
Only by pushing START button, optimum amount of water is supplied automatically from built-in water tank to steam generator.

There is no danger of low-water heating which may be caused by shortage or failure of water supply.



Bias Terminals

4 units of bias terminals for burn-in test are equipped as standard accessory.



Safety Door Locking System

The door is a double safety structure. It is safe and secure because the interlocking system which will be activated during operation is equipped. In addition, resin cover is attached to the door to suppress the heat conduction.

Alarm Device

In case that an over-pressure, over-heat or low-water heating etc., occurs during operation, the alarm device is activated immediately and the abnormality is informed by the character display and buzzer sound, and an operation stops.

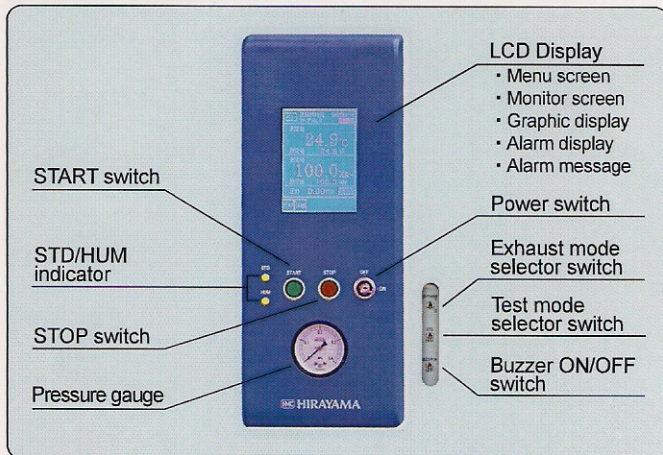
Test Mode

Test mode is selected with the selector switch from an unsaturated test and 2 kinds of saturated test.

Compact Design

Despite the dual chamber structure, the size is 60.7cm in width and 63.3cm in depth. It is compact and most suitable size to install it on the desk.

Operation Panel



Specifications

MODEL	PC-242HSR2
Overall dimension	607Wx633Dx476H mm
Chamber size	240Φx410D mm
Effective inner size	180Wx310Dx100H mm
Approx. weight	70kg
Power source	AC220/230/240V, 50/60Hz, 15A
Test mode	HUM (unsaturated), STD(saturated)
Operation mode	Programmed operation and Fixed-value operation
Programmed operation	150-pattern, 1500-step at max.
Temperature control	PID control / SSR drive
Working temp. range	105.0~133.3°C (at 100%RH) 110.0~140.0°C (at 85%RH) 113.6~144.4°C (at 75%RH)
Temp. control accuracy	±0.5°C
Distribution accuracy	±0.5°C (at 100%RH) ±1.0°C (at 85%RH)
Working humidity range	75~100%RH
Hum. control accuracy	±3%RH (at 85%RH)
Working pressure range	0.019~0.208MPa
Pressure vessel	Small size pressure vessel
Working time range	200hours, continuously
Timer range	1min. ~ 999.9hr.
Bias terminal	4 units
Chamber material	SUS316L (Electrochemical polish)
Water supply	Automatic water supply to steam generator from external water tank at time of start-up
Safety devices and Alarms	Pressure safety valve, Over-pressure prevention, Over-heat prevention, Low-water cut off device, Feed-water failure detector, Leakage breaker(with O.C.), Breaker for heater, Fuse, Safety door system (Door lock during operation), Self-diagnosis function, Negative pressure prevention device
Option	Recorder, Table, Basket

Specifications and appearance are subject to change without notice due to continuous product improvement.



Manufacturer :
HIRAYAMA Manufacturing Corp.

Distributor :

Manufactured under
ISO 9001 / 13485 / 14001

2-6-5, TOYONO-CHO, KASUKABE-SHI,
SAITAMA 344-0014, JAPAN
TEL:+81-48-735-1242 FAX:+81-48-733-2384
<http://www.hirayama-hmc.co.jp/>